

MONTHLY MEMBERSHIP PROGRESS REPORT

LOCATION INDIA

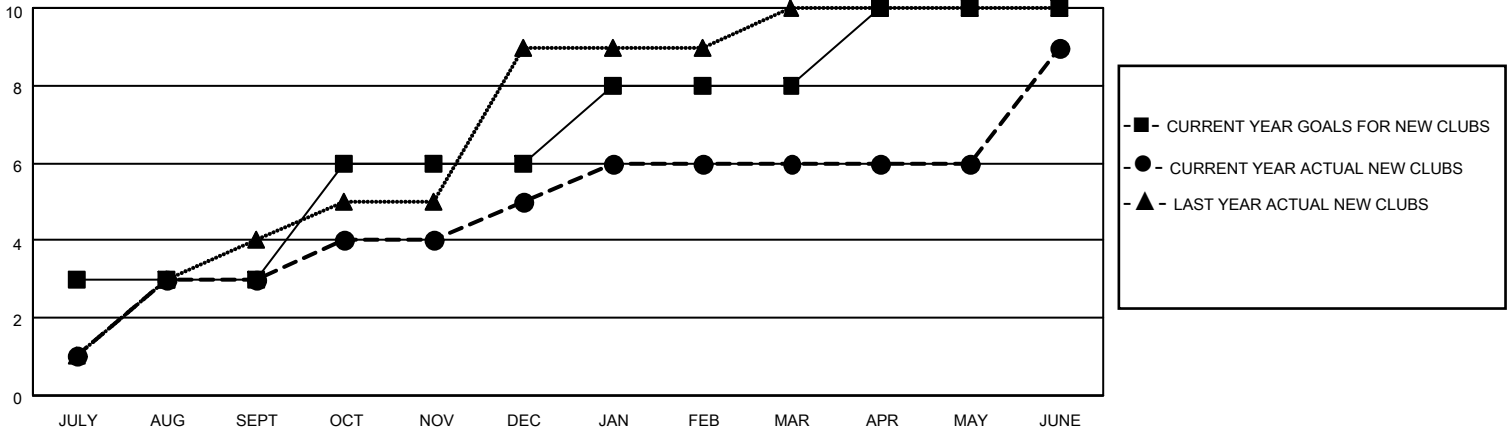
District 321C1

Results as of: 6/30/2022

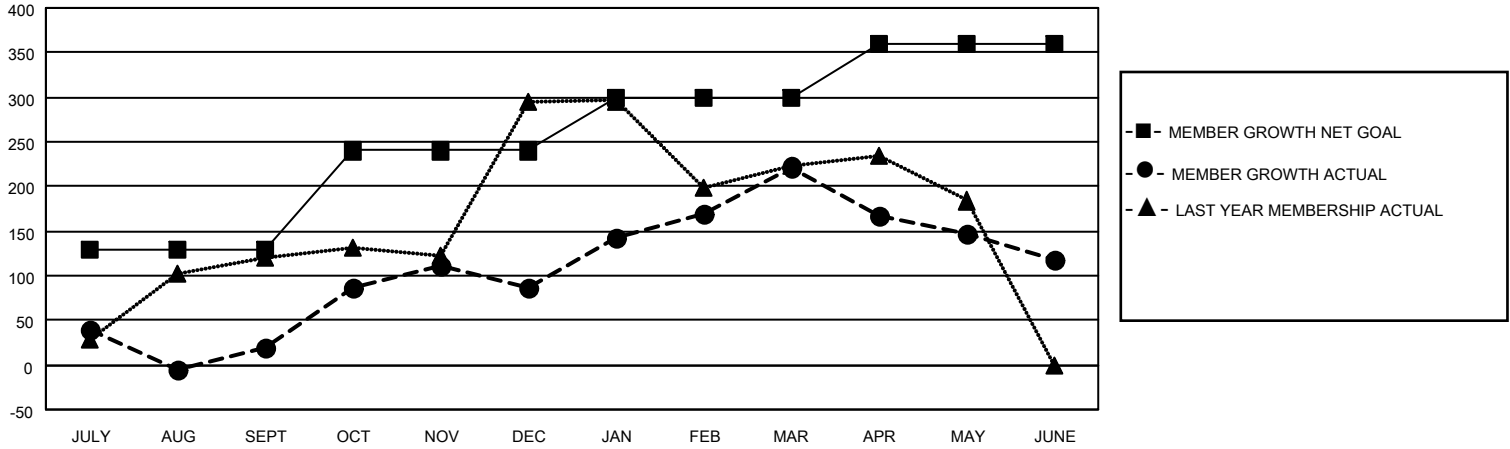
Clubs			
RESULTS FOR 2021-2022			
QUARTER	NEW CLUB GOAL	NEW CLUBS	DROPPED CLUBS
JULY/AUG/SEPT	3	3	14
OCT/NOV/DEC	3	2	6
JAN/FEB/MAR	2	1	3
APR/MAY/JUNE	2	3	6

Members			
RESULTS FOR 2021-2022			
QUARTER	MEMBER GROWTH NET GOAL	MEMBER GROWTH ACTUAL	DROPPED MEMBERS ACTUAL (including transfers)
JULY/AUG/SEPT	130	277	226
OCT/NOV/DEC	110	215	137
JAN/FEB/MAR	60	235	73
APR/MAY/JUNE	60	314	383

GOALS AND ACTUAL NEW CLUBS CUMULATIVE



GOALS AND ACTUAL MEMBERS CUMULATIVE



DROPPED CLUBS: 28

92 CLUBS OF 173 ADDED 1 OR MORE NEW MEMBERS

GENDER DISTRIBUTION

MALE	3,111 (67.73%)
FEMALE	1,479 (32.20%)
NON BINARY	0 (0.00%)
PREFER NOT TO ANSWER	3 (0.07%)

DROPPED MEMBERS

[CLICK HERE FOR CUMULATIVE MEMBERSHIP DATA](#)

DECEASED	20
CLUB CANCELLED	317
OTHER	482
TOTAL	819

TOTAL FAMILY UNIT MEMBERS 2,400

FAMILY MEMBERS PAYING HALF DUES 1,271